

GR Series

Glycerin Filled Gauges



Technical Data

Outside diameter 2 3/4" (68mm)
Connection standard 1/8"NPT bottom connection
Class 1.6 accuracy

Zero point adjustable
Gauge internals are all brass, no plastic pieces
Glycerin-filled

Designation	Pressure Scale			Temperature Scale			R134a	R404A	R507	R407C	R410A	Part No.
	bar	kPa	psi	R12	R22	R502						
GR-220-F-R12			●	●	●	●						7714013
GR-320-F-R12			●	●	●	●						7714098
GR-220-F-R134a			●				●	●	●			7714064
GR-320-F-R134a			●				●	●	●			7714102

R3 and R5 Series

Oil Filled Bellow Type Gauges

Bellow type gauges are extremely over-pressure resistant. A bellow type gauge can withstand up to 2.5 times over-pressurization of the printed pressure scale without damage to the gauge. A bourdon tube gauge cannot withstand this type of over-pressurization.



R3 Series

Technical Data

Outside diameter	2 3/4" (68mm)
Connection	standard 1/8" NPT bottom connection
Class	1.0 accuracy
Housing	Aluminum anodized body Zero point adjustable Gauge internals are all brass or steel, no plastic pieces Silicon-oil filled

Designation	Pressure Scale			Temperature Scale							Part No.	
	bar	kPa	psi	R12	R22	R502	R134a	R404A	R507	R407C		R410A
R3-220-F-R12			●	●	●	●						9884479
R3-320-F-R12			●	●	●	●						9884480
R3-220-F-R22			●		●		●	●				4667472
R3-320-F-R22			●		●		●	●				4667480
R3-220-F-R134a			●				●	●	●			9884481
R3-320-F-R134a			●				●	●	●			9884482
R3-220-F-R410A-FG			●		●			●			●	4662399
R3-320-F-R410A-FG			●		●			●			●	4662403

R5 Series

Technical Data

Outside diameter	3 1/4" (80mm)
Connection	standard 1/8" NPT bottom connection
Class	1.0 accuracy
Housing	Aluminum anodized body Zero point adjustable Gauge internals are all brass or steel, no plastic pieces Silicon-oil filled



Designation	Pressure Scale			Temperature Scale							Part No.	
	bar	kPa	psi	R12	R22	R502	R134a	R404A	R507	R407C		R410A
R5-220-F-R12			●	●	●	●						4493916
R5-320-F-R12			●	●	●	●						4493924
R5-220-F-R410A-FG			●		●		●				●	4675300
R5-320-F-R410A-FG			●		●		●				●	4675318

M2 / M5 Premium Series

Bourdon tube gauges

M2 Premium Series

Technical Data

Outside diameter 2 3/4" (68mm)
 Connection standard 1/8"NPT bottom connection
 Class 1.6 accuracy
 Housing standard all metal housing
 zero point adjustable
 gauge internals are all brass, no plastic pieces



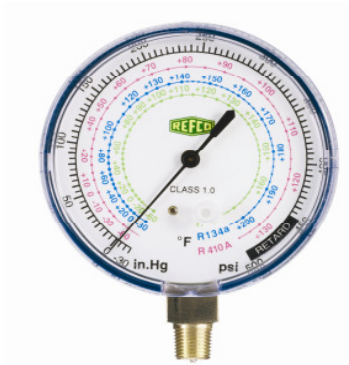
Designation	Pressure Scale			Temperature Scale					Part No.	
	bar	kPa	psi	R12	R22	R502	R134a	R404A		R507
M2-250-F-R12			●	●	●	●				7829168
M2-500-R-R12			●	●	●	●				7829567
M2-250-F-R22			●		●		●	●		7635083
M2-500-R-R22			●		●		●	●		7635147
M2-250-F-R410A			●							7829982
M2-500-R-R410A			●							7830000
M2-250-F-R410A-FG			●		●		●			7218188
M2-500-R-R410A-FG			●		●		●			7218358

Designation	Description	Part No.
M2-001	Replacement Lens Cover	1212648
M2-GS	Gauge protector set	4677451

M5 Premium Series

Technical Data

Outside diameter 3 1/4" (80 mm)
 Connection standard 1/8"NPT bottom connection
 Class 1.0 accuracy
 Housing standard all metal housing
 zero point adjustable
 pulse free



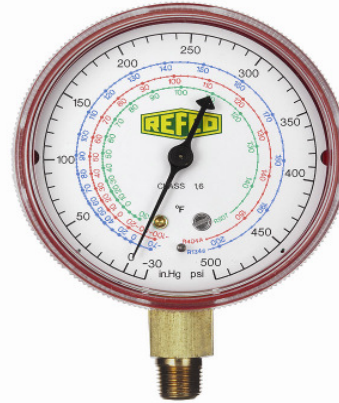
Designation	Pressure Scale			Temperature Scale					Part No.	
	bar	kPa	psi	R12	R22	R502	R134a	R404A		R507
M5-250-F-R410A-FG			●		●		●			4675288
M5-500-R-R410A-FG			●		●		●			4675296

KM2 Standard Series

Bourdon Tube Pressure Gauges

Technical Data

Outside diameter	2 3/4" (68mm)
Connection	standard 1/8"NPT bottom connection
Class	1.6 accuracy
Housing	Composite housing zero point adjustable gauge internals are all brass, no plastic pieces



Designation	Pressure Scale			Temperature Scale					R134a	R404A	R507	R407C	R410A	Part No.
	bar	kPa	psi	R12	R22	R502	R134a	R404A						
KM2-250-F-R12			●	●	●	●								4530152
KM2-500-F-R12			●	●	●	●								4530161
KM2-250-F-R22			●		●		●	●						4505417
KM2-500-F-R22			●		●		●	●						4505425
KM2-250-F-R134a			●				●	●		●				4530179
KM2-500-R-R134a			●				●	●		●				4530187

Designation	Description	Part No.
KM2-001	Replacement Lens Cover	4503350